



## FEATURES

- Integrated rigging and optional flybars allow al-8SB systems to be flown above or along side of al-8 acoustic elements arrays, as well as in a stand-alone flown low frequency arrays
- Skids and versatile hardware allows for easy ground stacking with al-8 acoustic elements
- Versatile integrated flying hardware and fly bars allows the easy assembly of ground stacked and flown arrays with al-8's and al-4 for maximum flexibility.
- Optimal performance is achieved when used with V Series Systems Engines

## DESCRIPTION

The al-8SB is a subwoofer designed specifically for use with the al-8 Line Array System. The al-8SB provides high output low frequency response from a compact and easily flyable package. When combined with an al-8 line array system, the al-8SB extends powerful and well defined low frequency reproduction down to below 35 Hz. The al-8SB can be used in flown arrays along with additional ground stacked VUE subwoofers for applications requiring impressive low frequency output (including large Dance Music events and Reggae).

The new al-8SB is designed to be flown as an array and supports cardioid configuration. The al-8-SB can be ground stacked with the al-8 three-way full range elements, as well as be flown together in a single array using four transition links with the new al-8SBFB (fly bar).

The system consists of the same 'C18' woofer with an ultra light-weight neodymium magnet which is found in the hs-28, housed in an enclosure which is exactly the height of two al-8 three-way boxes. This allows for some visual symmetry between flown arrays of al-8's and al-8SB's as well as providing enough enclosure volume for the woofer to produce solid bass response. The rigging is a four-point symmetrical configuration which facilitates the al-8SB's to be flown in a back-to-front pattern creating a cardioid bass arrangement. For neat cabling solutions a front input panel is located opposite the VUE logo to connect the reversed enclosure at the rear of the array.

A new fly beam design facilitates the flying of the new sub enclosures, and can also be used to fly arrays of al-8's. It can also be used for ground stacking al-8's on the sub enclosure, as well as flying an array of al-8's underneath the sub enclosures. The al-8-SBFB is an extension for the current al-8 fly beam. To maximize flexibility, new link attachments were created to attach the beam to both the top or bottom of an al-8SB enclosure.

## RUGGED AND VERSATILE ENCLOSURE

The al-8SB enclosure is constructed of top quality birch plywood, coated in the same durable 12-step Dura-Coat LX finish as the al-8 acoustic elements. Extensive interior bracing ensures resonant-free low frequency performance. The machined, powder-coated steel grill with acoustically transparent lining provides ample driver protection while completing the refined al-Class aesthetic.

Integrated rigging hardware ensures that the al-8SB is perfectly configured for use in any al-8 line array system in both suspended as well as ground stacked configurations. Recessed handles and skids are standard along with recessed front and rear mounted dual Neutrik Speakon sockets which provide easy input connection from the back in both conventional and cardioid arrays.

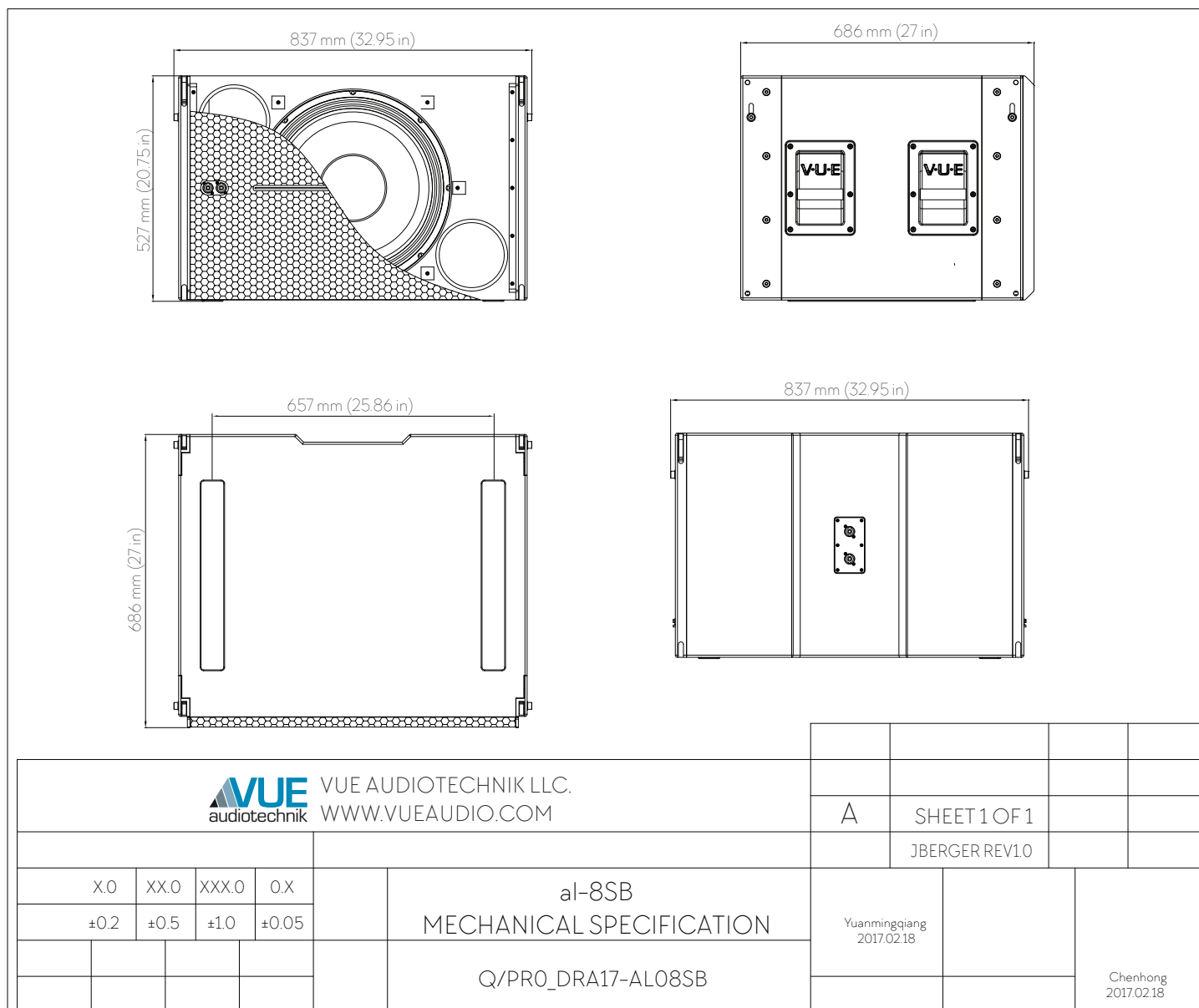


**SYSTEMVUE**  
SOFTWARE  
MONITORING AND CONTROL

## THE VUEDRIVE™ ADVANTAGE

Ultimate performance is achieved when the al-8SB is used with one of VUE's V Series Systems Engines. Custom al-8SB configuration settings are available (via SystemVUE software) to optimize the powerful processors for al-8SB arrays found inside the V4 and V6 engines. V Series amplifiers provide ample power for four al-8SB elements with the V4 and up to six al-8SB subwoofers in cardioid configuration with the V6.

# al-8SB DIMENSIONAL DRAWING



## SPECIFICATIONS

### FLYABLE LINE ARRAY SUBWOOFER SYSTEM

DESCRIPTION	Flyable Line Array Subwoofer
ACOUSTIC DATA	
Frequency Response (+/- 3 dB)	36 Hz - 200 kHz
Frequency Range (-10 dB)	27 Hz - 500 KHz
Sensitivity (1 W/1 m)	96 dB SPL (Free Air / Whole Space)
Power Handling Long Term	1000 watts (AES)
Max Peak SPL	132 dB SPL Long term pink noise 6 dB crest factor 142 dB SPL Music program transient peak
Max SPL Long Term (AVG SPL @1 band limited pink noise 6 dB crest factor))	126 dB SPL
Coverage Horizontal	360 degrees - 6 dB
Coverage Vertical	360 degrees - 6 dB
TRANSDUCER DATA	
LF Driver Description	18-inch neodymium long excursion with 4-inch voice coil and dual spider
Impedance	8 Ohms
Connectors	Neutrik NL4 Speakon, in and loop, on front and rear
PHYSICAL DATA	
Cabinet Material	Multi-ply birch plywood
Cabinet Surface	Dura-Coat LX - an elastomer synthetic resin chemical coating
Rigging:	Four-point rigging system, integrates with al-8 acoustic elements
Fly Bar:	al-8SBFB (82.5 lbs / 37.43 Kg)
Handles:	Four Metal
Dimensions (H x W x D)	20.65 x 32.09 x 27 in (524.6 x 815 x 686 mm)
Weight	Net: 140 lbs / 63.63 kg
ACCESSORIES	
al-8SBFB	Fly bar for al-8SB arrays (requires 2x fly ak-8 under al-8SB)
al-8SB-2xtr	Transport rack for up to 2x al-8SB subwoofer systems